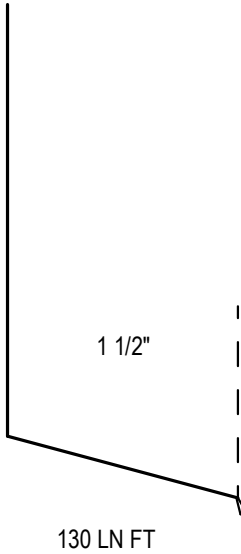
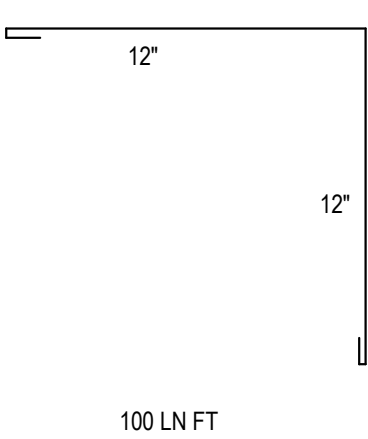




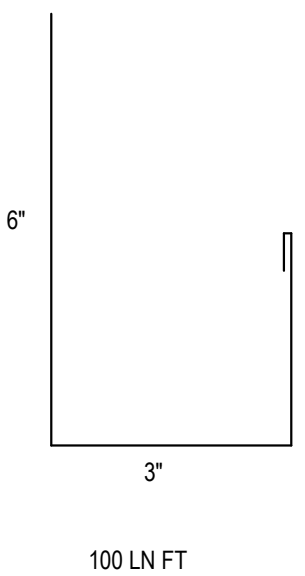
SILL FINISHING



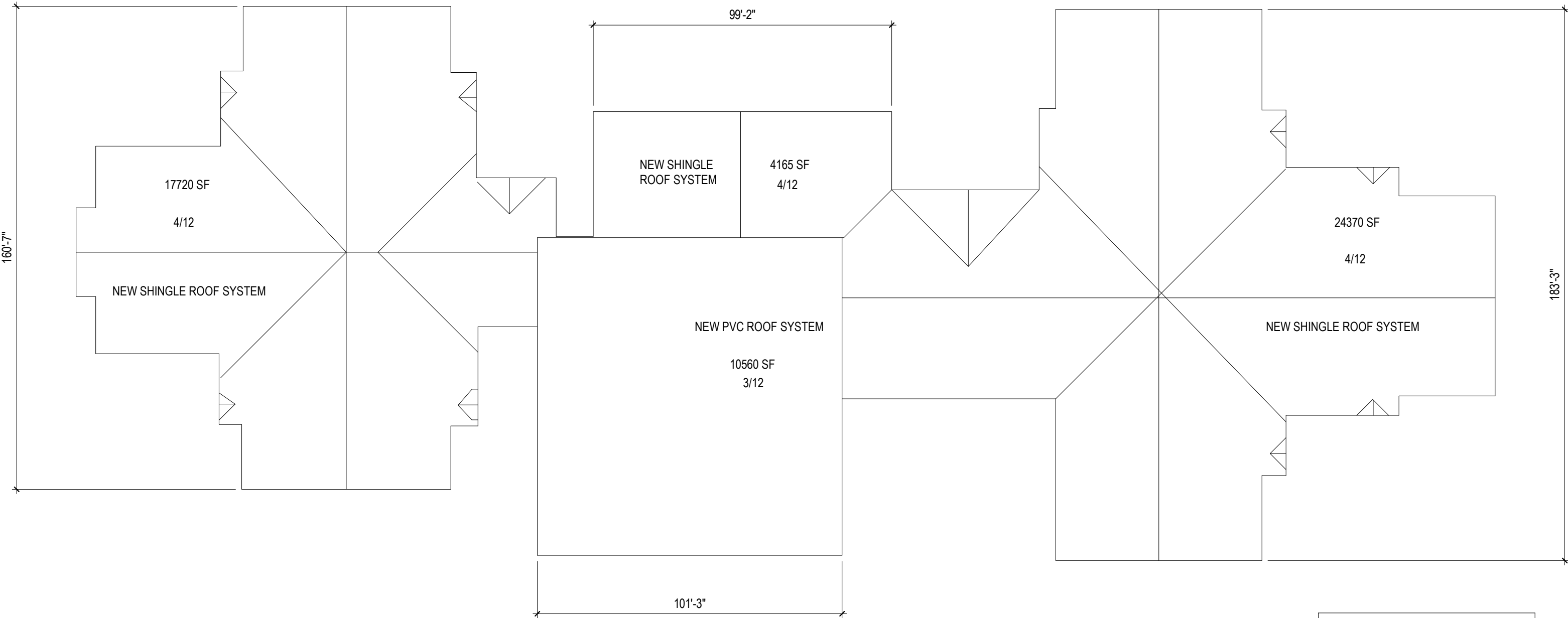
CORNER TRIM



CUSTOM J PANEL



SIG 200 FINISH



APPROX. 56,815 TOTAL SF

\* ALL DIMENSIONS, SQUARE FOOTAGES, AND ROOF SLOPES APPROXIMATE; VERIFY IN FIELD

GENERAL NOTES FOR ELEMENTARY

9' ROW OF ICE AND WATER MEMBRANE AT ALL EAVES

9' ROW OF ICE AND WATER MEMBRANE AT ALL VALLEYS

3' ROW OF ICE AND WATER MEMBRANE AT ALL RAKE EDGES

## 1 Elementary School Roof Plan

A2.3 | 1/32" = 1'-0"

## 2 Middle/High School Roof Plan

A2.3 | 1/32" = 1'-0"

APPROX. 65,550 TOTAL SF

○ ADD METAL CORNER TRIM OVER BRICK - SEE DETAIL

\* ALL DIMENSIONS AND SQUARE FOOTAGES APPROXIMATE; VERIFY IN FIELD

4/9/2025



ARCHITECT  
**SEDGEWICK + FERWEDA ARCHITECTS**

410 East Court Street Flint, MI 48503  
810-238-9647 | [www.sfarch.us](http://www.sfarch.us)

Good clients + Good design + Great architecture



| REVISIONS |             |
|-----------|-------------|
|           |             |
|           |             |
|           |             |
|           |             |
|           |             |
|           |             |
| Date      | Description |

Project  
**Pelston Schools Roof Renovations**  
**172 Park St, Pellston, MI 49769**

Drawing  
**Roof Plan**

DRAWN BY: TAG  
CHECKED BY: JSF

PROJECT NUMBER **25-015**  
DATE **04/01/2025**  
SCALE **1/32" = 1'-0"**  
SHEET NUMBER

**A2.3**